



[www.gosforthpark.newcastle.sch.uk](http://www.gosforthpark.newcastle.sch.uk)

November 14<sup>th</sup> 2025 Issue 2/7 Autumn Term 2

## Children in Need



It was great to welcome Pudsey back into school today! Pudsey enjoyed touring the school and meeting all of our classes and then enjoyed a catch up with me and Mr Hindess in my office.

Thank you all so much for your donations – we have raised **£180** so far. Check out the photos below!

Mrs Lamb

## Building Works

We're keeping our fingers crossed that, after several delays, the uneven surfacing beyond the metal fencing in the old Broadway East yard will finally be removed over the weekend. On Monday morning, there will be at least one skip in the staff car park, and possibly other large vehicles, while the waste is cleared. Please ensure children stay away from the fenced area and are closely supervised on Monday until all removal work is complete.

## Polite Reminder



We are delighted that so many of you cycle and scoot to and from school. Please remind children **not to use their bike and scooters on the school yard**. Bikes and scooters should be dismounted at the very first **green gate** and walked on to site.

Thank you for your co-operation.





BBC

# Children in Need

We have had a brilliantly spotty day today raising money for the Children in Need appeal.

Everyone has enjoyed some Pudsey-themed activities, and we even had a surprise visit from the spotty bear himself!



A huge Gosforth Park thank you to **Michelle**, our **ASDA community champion** who organises our special visitor every year!







## Musician Of The Half Term

# KELLY CLARKSON

Kelly Clarkson (born on April 24, 1982) is a famous American singer, songwriter, and TV star. She first became famous when she won the very first season of the TV show American Idol in 2002. Since then, she has had a long career in music and television.

Kelly is known for her powerful voice and can sing many different styles of music. She has sold over 82 million records around the world. Some of her most famous songs include "Since U Been Gone", "Because of You", and "Stronger".

Besides singing, Kelly has been a coach on the TV show The Voice. She also hosts her own popular talk show, The Kelly Clarkson Show. She has won many awards, including three Grammy Awards and eight Daytime Emmy Awards.



thehits\*

Since U Been Gone

Because of You

Stronger

Breakaway



Underneath the Tree

Have Yourself a Merry Little Christmas

Run Run Rudolph

and many more...

Our musician of the half term for Autumn 2 is... **Kelly Clarkson!** Please listen to her hit singles if you have time, and listen to the Christmas songs (unless you think it is too early!)

Thanks, Mr P



**PTFA**

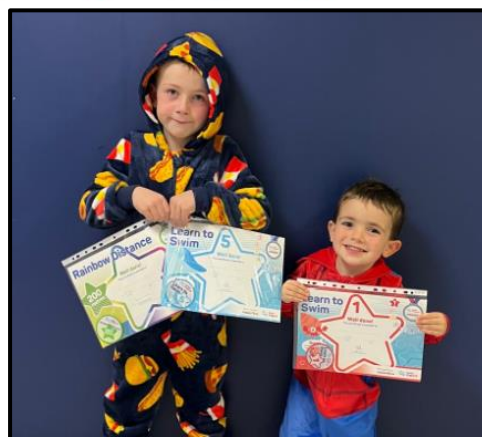
Our next meeting will be held on **Tuesday 18th November** at **6:15pm** in the community room. Everyone is welcome!

## Remembrance Day 2025



Thank you so much for your generous donations to the Poppy Appeal – we almost 'sold' out. We were very proud to see **Mr Brown** at the service of remembrance held at the City War memorial at Old Eldon Square.

On Monday 11th November at 11am all children across Gosforth Park held a 2 minute silence to reflect on the service and sacrifices of the armed forces.



Myles and Ellis both got badges at swimming this week. Ellis achieved level 1 and Myles received his level 5 and 200m badge. Well done – we are so proud of you both!

# Autumn 2: Half Term Topics

Here are the themes of study that your children will be learning about during this half term:

## Reception – *Space*

Reception will be immersed in a topic of awe and wonder as they blast off into a world of possibilities. They will learn about real life astronauts, constellations and the different planets in our solar system.



## Year One – **Toys**

Our Year 1 children will be introduced to the idea of **change over time** by looking at how our favourite toys have developed within living memory. We will be encouraging pupils to talk to their relatives about their childhood toys and reflecting upon features that have changed and things that have stayed the same.



## Year Two – **Fire, Fire!**

Year 2 will be travelling further back beyond living memory nearly 400 years to learn about the significant event of the Great Fire of London. Children will learn about the historical concepts of **cause and consequence** by examining the various unfortunate reasons why the fire became so large. We will learn about Samuel Pepys and the importance of his diary as a historical source of information.



## KS2 – **World War 2**

Children in KS2 will be learning about World War 2. We will be focusing upon the concept of **invasion** to understand the causes and consequences of the war. We are fascinated by the impact of the Blitz on children – such as being evacuated to the countryside or sleeping in Anderson Shelters.



Check out the topic webs attached to the newsletter to find out more about what your child will be learning about across all curriculum areas. Also, please visit the Curriculum pages on our school website.

Mr Hindess



## Healthy School

### ROAD SAFETY WEEK

by  Brake, the road safety charity

Next week is road safety awareness week led by the charity Brake. This year their focus is on “safe vehicles”, making accidents that occur as preventable as possible. Part of their message involves encouraging drivers to ensure their vehicles are fully road worthy and that newer technology in cars, which assist with road safety, are understood and used properly.

The charity also provides a free, professional trauma informed service for victims of traffic accidents, including expert emotional and practical support.

Find out more at [Road Safety Week | Brake](https://www.road-safety-week.co.uk/)

Mrs Wells



Our Golden Welly award goes to **Mr Guest's** class this week. They have helped lots with our OPAL video, and have given me some lovely ideas for outside – thank you!

Our OPAL challenge winner is Joe from Miss Bell's class. He found all of the letters around our playground, and correctly solved the anagram, spelling the word 'spooky'. Well done! Ms Gasper



## KS2 Victoria Tunnel + Northern Print

KS2 will be visiting the **Victoria Tunnel** as part of our World War 2 programme of study. Children will have a guided tour of the tunnel and complete a classroom workshop. We will also visit **Northern Print Studio** where we will be designing and making a WW2-themed poster linked to our Art and Design Curriculum.

### Children will need to bring

- A backpack containing a packed lunch and water bottle
- Suitable outdoor footwear (the tunnel is damp and muddy in places)
- Warm, washable jacket/coat

Please **confirm your consent** via ParentPay by Friday 14th November (today..!)

I would like to **thank the PTFA** who agreed to subsidise the cost of this trip by £5 per child.

Mr Hindess



## TIMES TABLES ROCK STARS

Miss Bell's class have stayed top of the leader board this week for most active class. Congratulations to Anna Si who has made it to Rock Star status – our first new Rock Star in Year 4 this year! Our top coin earners this week Anna Si, Luke P, Frankie O and Fionntan M.



My class (Year 1 Miss Pope) are the most active class this week! It's great to hear so many of you telling me about the badges you've earned and what you have bought your robot with the coins you earned!

Our top coin earners this week are:

Miss Pope – **Toby B**

Mr Edwards – **Sean O**

Miss Tate – **Harrison J**

Mr Patterson – **Alice W**

Mr Hindess and Mrs Armstrong – **Arisa K**

Mr Guest – **Finn H**

Miss Bell – **Josh S**

Well done,

Miss Pope.

## Attendance

Our whole school attendance to date this academic year is **97.2%** which is slightly up on last year's **97.1%**.

Our classes of the week this week are **Year 2 Mr Patterson** with **100%** and **Year 2 Miss Tate** with **98.3%**

Well done everyone!

Mrs Lamb

## Pre-Loved Uniform

PRE-LOVED ITEMS WE CAN SELL		PRE-LOVED ITEMS WE CAN NOT SELL
OFFICIAL SCHOOL JUMPERS/HOODIES	£2.50	NON – OFFICIAL JUMPERS
OFFICIAL SCHOOL CARIGANS	£2.50	NON – OFFICIAL CARIGANS
OFFICIAL SCHOOL POLOS	£1.50	NON – OFFICIAL POLOS
GIRLS CHECKED DRESSES	£1.50	GREY BOYS TROUSERS
GREY PINAFORES	£1.50	GREY TAYLORED GIRLS TROUSERS
GREY SKIRTS	£0.50	GREY BOYS SHORTS
GREY GIRLS SOFT TROUSERS	£0.50	DAMAGED OR MARKED ITEMS
SCHOOL BAG (NEW STYLE)	£2.50	

Items are sold from 1 Park Drive, Melton Park NE3 5QB, with a drop off box in front of the garage. Please only drop off items on the list that can be resold.

Please REMEMBER items must not be marked as they are unable to be sold on. You can text me Natasha Davy (Parent) on 07736276653. All money made comes back to school to be spent on playground equipment for our wonderful children.



Please remember that there is also a pre-loved uniform drop off area in the main entrance to help us to reuse, recycle and re-love uniform for the benefit of our children and community.

**Brrrr** – Although it's been a fairly mild start to the term it certainly felt a little bit chillier on the gate today. There are hints of snow in next week's forecast and Mr Brown is ready to grit paths and playgrounds to keep us all safe. In more extreme weather, where it is not practical to grit the whole site, one of the following two systems will be in place.

**Red Route (red dotted line on map)** – this is the minimum which will be gritted in **extreme weather** (snow and ice) if school is open

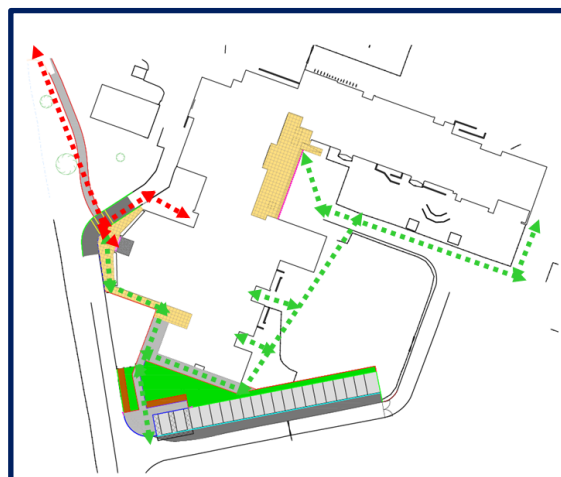
- The pathway leading from the school gate down the main path into the main entrance (this will be used by Year 1 - 4)
- The pathway leading from the school gate down the main path into the wraparound entrance (this will be used by Nursery and Reception)

Staff will be at the front of school to show children where to enter school when usual doors are not accessible.

**Green Route (green dotted line on map)** will be gritted in addition to the red route **on typical icy days** but not in exceptional circumstances and/or extreme weather.

This will cover

- The pathway leading from the school gate down the main path, past the front entrance, round the path and through the gate onto the main playground (in approximately a 1m wide path) to the KS2, KS1, Reception and Nursery doors.
- A pathway from the car park to the main path



We will send the following messages on ParentPay to let you know which system is in operation. Our full gritting policy can be found here:

<http://www.gosforthpark.newcastle.sch.uk/website/policies/85462>

**Dear Parents**

School will be open today, however, due to extreme weather, please make sure you follow the gritted pathways allowing children to enter school via the main office (Year 1-4) and Wraparound entrance (Nursery and Reception). Please do not arrive early and do not let your child play on un-gritted/un-cleared areas before or after school.

Please take extreme care on your way to school and let the school office know as soon as possible if your child is unable to attend today.

Many thanks

**Dear Parents**

Please make sure you follow the gritted pathways allowing children to enter school via their usual allocated doors this morning. Please do not arrive early and do not let your child play on un-gritted/un-cleared areas before or after school.

Please take extreme care on your way to and from school.

Many thanks

# Starting School in September 2026!

## Applying for Places

**Nursery Application forms for places in September 2026** will be available on the school website and from the office from Friday 9th January 2026.

The closing date for applications is 27th March 2026 at noon.

Offer letters will be emailed out on Wednesday 1st April 2026.

The deadline for accepting a place is Friday 24th April.

## Reception Applications for September 2025

Applications open: 1st September 2025

Applications close: 16th January 2026

National offer day: 16th April 2026

Further information can be found at

<https://www.newcastle.gov.uk/services/schools-learning-and-childcare/apply-school-place/applying-reception-places>

## Reception 2026

We've already had lots of enquiries regarding visits for our Reception 2026 intake. Parents are able to visit the school on the following dates. Please phone the school office to book a place.

- Tuesday 11th November 9:30 – 10:30
- Wednesday 12th November 5:00 – 6:00

### New Dates:

- **Monday 17<sup>th</sup> November 9:30 – 10:30**
- **Wednesday 19<sup>th</sup> November 5:00 – 6:00**

## Transferring school in 2026

Essential information about making an application to transfer to middle, secondary or high school.



Find out more and apply online at [www.newcastle.gov.uk](http://www.newcastle.gov.uk)

The closing date is 31 October 2025.

## Middle School Applications for September 2025

Applications open: 1st September 2025

Applications close: 31st October 2025

National Offer Day: 2nd March 2026

Further information can be found at

[Applying for Transfer places | Newcastle City Council](#)

Mrs Lamb





# Rainbow Wraparound

Bookings must be made during the booking window which opens on the 10<sup>th</sup> of each month and closes on the 20<sup>th</sup> of each month, for the following month.

	<b>Booking opens 12 noon</b>	<b>Booking closes 12 noon</b>
<b>October bookings</b>	September 10 <sup>th</sup>	September 20 <sup>th</sup>
<b>November bookings</b>	October 10 <sup>th</sup>	October 20 <sup>th</sup>
<b>December booking</b>	November 10 <sup>th</sup>	November 20 <sup>th</sup>
<b>January bookings</b>	December 3 <sup>rd</sup>	December 17 <sup>th</sup>
<b>February bookings</b>	January 10 <sup>th</sup>	January 20 <sup>th</sup>
<b>March bookings</b>	February 10 <sup>th</sup>	February 20 <sup>th</sup>
<b>April bookings</b>	March 10 <sup>th</sup>	March 20 <sup>th</sup>
<b>May bookings</b>	April 10 <sup>th</sup>	April 20 <sup>th</sup>
<b>June bookings</b>	May 10 <sup>th</sup>	May 20 <sup>th</sup>
<b>July bookings</b>	June 10 <sup>th</sup>	June 20 <sup>th</sup>

Parents must make their own bookings on the school cloud system. The only exception to this is families using vouchers. If you are emailing dates for voucher bookings, you must include

- Your child's name
- The day and date
- The sessions required (breakfast, until 5pm, until 6pm).

If you would like to, you can book sessions in advance for the entire school year.

If you do wish to book the same sessions for the entire school year, please email Mrs Carrick at [wraparound@gosforthpark.newcastle.sch.uk](mailto:wraparound@gosforthpark.newcastle.sch.uk)

Block bookings can only be made via email or through school cloud (not text message).

Please email [wraparound@gosforthpark.newcastle.sch.uk](mailto:wraparound@gosforthpark.newcastle.sch.uk) for any wraparound queries, **NOT the admin inbox or Mrs Carrick directly, as this will delay any response and may result in you missing the booking window.**

**Please ensure all block bookings are made/requested before the booking window closes. We cannot guarantee any block bookings after this date.**

If you have any queries, please do not hesitate to get in touch.

Thanks

Mrs Carrick

[wraparound@gosforthpark.newcastle.sch.uk](mailto:wraparound@gosforthpark.newcastle.sch.uk)

GPFS PTA PRESENTS OUR

# Wreath Making Workshops



**£40pp**  
including all materials  
and a festive treat.

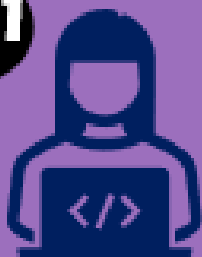
Available to  
book via  
ParentPay

Saturday 29<sup>th</sup> November  
GPFS Community Room  
2 - 5pm or 5 - 8pm

# Applying for working parents' free childcare



1



Apply through the childcare service using:

<https://www.beststartinlife.gov.uk>

You will need to confirm your identify

If successful you will receive an eligibility code – '50xxxxxxxxx'



2

3



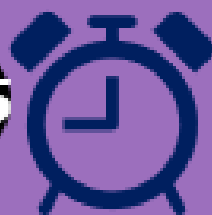
Take this code to your childcare provider with your NI number, child's date of birth and complete a Parent Declaration form

Your childcare provider checks the code is valid and if valid, confirms when you can start



4

5



Every three months, you **MUST** reconfirm your eligibility through your childcare account (helpline below)

Your 30-hour eligibility code has a validity end date.

**If you fail to reconfirm or become ineligible, you will stop receiving the free hours.**

**This is your responsibility.**

For support call the childcare service on

**0300 123 4097**



# SEND Support Hub 2025 Autumn Event



**26th November 2025**

**10am to 1pm**

**Galafield Family Hub,  
Newcastle upon Tyne, NE5 1LZ**



Come along to our **FREE** event. Find out about **education, health and social care services** available to children and young people with additional needs and/or disabilities. Chat with services to find out what they can offer. Plus there will be a free soft play for little ones.



**Arrive anytime. No need to book!**

**Scan the QR code to register your interest**

[localoffer@newcastle.gov.uk](mailto:localoffer@newcastle.gov.uk)



# What Parents & Educators Need to Know about AI-GENERATED VIDEOS

## WHAT ARE THE RISKS?

AI-generated videos are increasingly difficult to spot and easy to share. From fake news clips to deepfake abuse, children and young people face new risks every day online. These videos can imitate real people, spread false narratives or even generate harmful content from scratch. Understanding these dangers is crucial for schools and families who want to protect children in a fast-evolving digital world.

### DEEPAKE ABUSE CONTENT

Shockingly, artificial intelligence is now being exploited to create child sexual abuse material (CSAM). These synthetic images and videos are a form of digital abuse, often generated by manipulating real children's photos, including ones shared innocently online. Worryingly, the Internet Watch Foundation (IWF) has identified a sharp rise in this disturbing trend. Whether real or AI-generated, this content causes lasting trauma – and its creation or possession remains a criminal offence under UK law.

### BLURRED REALITY

Regular exposure to fake content can erode a child's trust in real-world evidence. If everything can be faked, they may begin to question genuine videos – including actual abuse or injustice. This is known as the 'liar's dividend', where real harm is dismissed as fake news. It can discourage victims from coming forward or speaking up.

### USED FOR BULLYING

Deepfake technology is already being used by peers to create embarrassing or explicit clips of classmates. These videos can be edited to appear as though a child said or did something they never did. Once shared, they are almost impossible to delete completely. AI-generated bullying adds a new layer of harm that is deeply personal and difficult to prove.

### EMOTIONAL MANIPULATION

AI-generated videos can be used to provoke strong emotions, including fear, anger or guilt. False footage of crying children, injured animals or burning buildings may be created purely for clicks, donations or political influence. Children may feel upset or powerless, unaware that what they are watching has been digitally invented to manipulate their reaction.

### DISINFORMATION

AI-generated videos can spread fake news, making it harder for children to separate fact from fiction. False clips may include deepfake interviews, hoax disasters or fabricated health claims. AI is already being used to produce misleading or persuasive material that appears authentic. If they don't develop media literacy, children may accept false content as truth.

### IMPERSONATION AND SCAMS

With just a few photos or voice clips, AI tools can imitate someone's appearance or speech. This makes it easier for scammers or bullies to create fake videos of children, teachers or celebrities. These impersonations can be used for fraud, harassment or humiliation – and can spread quickly through social media or group chats, due to the viral potential of video, in particular, on social media.

## Advice for Parents & Educators

### TEACH HOW IT WORKS

Explain to children that videos can be faked – and show them how. Demonstrating side-by-side examples of real vs AI-generated clips helps to build awareness. Discuss how faces, voices and even movements can be copied by machines. Understanding the technology reduces fear and builds confidence in navigating digital content safely.

### TALK ABOUT TRUST

Always keep lines of communication open. If a child sees something upsetting or unbelievable, they should feel safe discussing it without judgement. Create an environment where they know they will not get in trouble for asking questions. This also helps you step in quickly if harmful content has been shared; trust is vital and needs to be nurtured.

### ENCOURAGE CRITICAL QUESTIONS

Help children question what they watch. Who made this? Why was it made? Is it trying to persuade me? These habits encourage digital thinking, especially when videos seem too shocking or convenient. Reinforce that not everything shared by friends or influencers is true, even if it looks convincing at first, and that the initial approach should always be one of speculation.

### STRENGTHEN PRIVACY SETTINGS

Advise children not to share voice notes, selfies or personal videos on public platforms. AI tools often scrape content from social media to create deepfakes. Use privacy controls to limit who can see their content and turn off facial recognition where possible. Fewer public images means fewer opportunities for misuse.

### Meet Our Expert

Brendan O'Keeffe is a headteacher and digital education consultant with over a decade of experience in education. As Director of Digital Strategy across multiple schools and an advisor to The National College, he specialises in digital safety, PREVENT, and pastoral care.



#WakeUpWednesday

The National College