



[www.gosforthpark.newcastle.sch.uk](http://www.gosforthpark.newcastle.sch.uk)

November 21<sup>st</sup> 2025 Issue 3/7 Autumn Term 2



Dear Parents,

This year our children from Reception to Year 4 will be going to Gosforth Civic Theatre on Thursday 18th December to see their production of a show called 'A Town Called Christmas'. It is sure to be a magical show filled with puppets, fairy lights, songs and dancing. We will be walking from our school to the theatre on the day and the trip is being paid for from our generous PTA.

There will be two showings on the day:

Showing one- Reception and Year 1- 10:30 showing (leaving school at 9:45am)

Showing two- Year 2-Year 4- 13:30 showing (leaving school at 12:45pm)

All children will return to school before school finishing time.

Please ensure you provide permission for your child to attend the trip via ParentPay.

We would also love parent helpers to assist us in walking from the school to the theatre on the day. Parents are then welcome to stay and enjoy the show. Please inform the office if you are able to attend alongside your child. We are always very appreciative of the help and support you provide. Please understand that we cannot take all parents.

Thank you  
Miss Bell



BBC

Children  
in Need

Our final total raised for Children in Need last week was £226. Thank you so much for your donations.



## Santa Dash Daily Mile

On **Wednesday 10th December**, it's **Christmas Jumper Day** AND our festive iteration of the much-loved **daily mile**. We invite all our children to wear Santa hats, reindeer antlers or any other funky headgear alongside their jumpers if they would like to. Don't forget your trainers! Last year, an incredible **116,499** young people took part all across the country, here's to another record-breaking festive dash round the playground!

Mr Guest

## Reminder

The last day of term is **Friday 19<sup>th</sup> December 2025**. School reopens on **Monday 5<sup>th</sup> January**.



## PTFA

Our PTFA had a lovely meeting on Tuesday evening planning our upcoming Christmas events.

### PTFA Christmas Eve Bags

Our brilliant Christmas Eve Bags are back again this year filled with everything you need for a cosy Christmas Eve!



Bags are available to buy via ParentPay until Friday 5th December and will be available to collect after your child's Christmas Performance.

Many thanks  
PTFA

## Non Uniform Day

We will be holding a non-uniform day on **Friday 5th December** in return for donations for our Christmas hampers which will be raffled off at the Christmas performances. Please check out the poster below for more details (full size poster at the end of the newsletter).



Please see below our lucky 100 Club Winners!

### \*October\*

- ★ 1st \*£25.20\* number 15 - Gemma Hopkins
- ★ 2nd \*£12.60\* number 27 - Isabelle D and family
- ★ 3rd \*£6.30\* number 57 - The Crown family

### \*November\*

- ★ 1st \*£25.20\* number 24 - The Richardsons
- ★ 2nd \*£12.60\* number 25 - Isabelle D and family
- ★ 3rd \*£6.30\* number 59 - The Famelton family

Our next meeting will be held on **Tuesday 18th November at 6:15pm** in the community room. Everyone is welcome!





What a shock to the system the weather has been this week! Now it is colder and there may be lots of damp and icy mornings, we need to be mindful of this when planning our journeys to and from school. The Walk Wheel Cycle Trust has several tips on cycling in winter months, some of which can also be relevant for those who walk or scoot to school. They also have links to advice on cycling in the snow, rain and the dark; bike maintenance and how to stay motivated in winter months.

Find out more at [11 tips for winter cycling - Walk Wheel Cycle Trust](#)


Mrs Wells



Well its been a bit of an interesting week weather wise! Unfortunatley the wet, icy and snowy weather have made OPAL a bit tricky this week. Ms Gasper will be looking for her welly winners when the weather is a bit better next week!



## Helping Your Child with Anxiety and Worries Online Webinar

 Wednesday 26  
November 2025

 10am-11am



For more information about **RISE** please visit:



[rise.childrenssociety.org.uk/](http://rise.childrenssociety.org.uk/)



[www.youtube.com/@rise-ne](https://www.youtube.com/@rise-ne)



[facebook.com/rise.ne](https://facebook.com/rise.ne)



[@rise.ne](https://www.instagram.com/rise.ne)



## TIMES TABLES ROCK STARS

Miss Bell's class are still top of the leaderboard this week! Our top coin earners are **Anna Si**, **Laurie G-R** and **Patrick B**.



Mr Patterson's class have been our most active class this week!

Our top coin earners this week are:

- ★ Miss Pope – **Edward G**
- ★ Mr Edwards – **Ada R**
- ★ Miss Tate – **Nour I**
- ★ Mr Patterson – **Martha H**
- ★ Mr Hindess and Mrs Armstrong – **Arisa K**
- ★ Mr Guest – **Alfie R**
- ★ Miss Bell – **Arthur W**

Keep up the good work,

Miss Pope.

## Attendance

Our whole school attendance to date this academic year is **97.1%** which is slightly up on last year's **96.9%**.

Our classes of the week this week are **Year 3 Mr Hindess and Mrs Armstrong** with **99.2%** and **Year 3/4 Mr Guest** with **98.7%**!

Well done everyone!  
Mrs Lamb



Well done to Georgie who brought her horse riding rosettes in to assembly last week!



## Pre-Loved Uniform

PRE-LOVED ITEMS WE CAN SELL		PRE-LOVED ITEMS WE CAN NOT SELL
OFFICIAL SCHOOL JUMPERS/HOODIES	£2.50	NON – OFFICIAL JUMPERS
OFFICIAL SCHOOL CARIGANS	£2.50	NON – OFFICIAL CARIGANS
OFFICIAL SCHOOL POLOS	£1.50	NON – OFFICIAL POLOS
GIRLS CHECKED DRESSES	£1.50	GREY BOYS TROUSERS
GREY PINAFORES	£1.50	GREY TAYLORED GIRLS TROUSERS
GREY SKIRTS	£0.50	GREY BOYS SHORTS
GREY GIRLS SOFT TROUSERS	£0.50	DAMAGED OR MARKED ITEMS
SCHOOL BAG (NEW STYLE)	£2.50	

Text Natasha Davy (Parent) on 07736276653.  
All money made comes back to school to be spent on playground equipment for our wonderful children.

## Reminder

In more extreme weather, where it is not practical to grit the whole site, one of the following two systems will be in place.

**Red Route (red dotted line on map)** – this is the minimum which will be gritted in **extreme weather** (snow and ice) if school is open

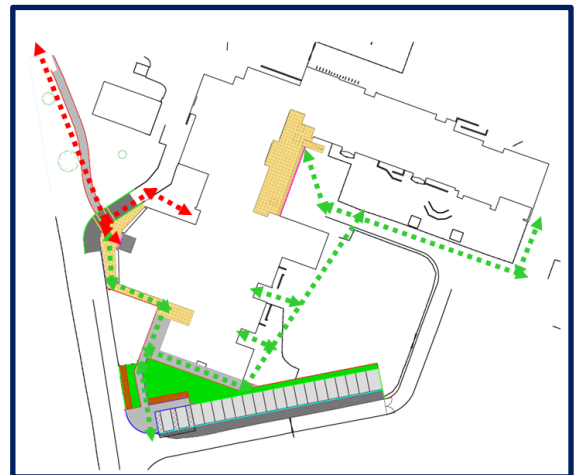
- The pathway leading from the school gate down the main path into the main entrance (this will be used by Year 1 - 4)
- The pathway leading from the school gate down the main path into the wraparound entrance (this will be used by Nursery and Reception)

Staff will be at the front of school to show children where to enter school when usual doors are not accessible.

**Green Route (green dotted line on map)** will be gritted in addition to the red route **on typical icy days** but not in exceptional circumstances and/or extreme weather.

This will cover

- The pathway leading from the school gate down the main path, past the front entrance, round the path and through the gate onto the main playground (in approximately a 1m wide path) to the KS2, KS1, Reception and Nursery doors.
- A pathway from the car park to the main path



We will send the following messages on ParentPay to let you know which system is in operation.

Our full gritting policy can be found here:

<http://www.gosforthpark.newcastle.sch.uk/website/policies/85462>

Dear Parents

School will be open today, however, due to extreme weather, please make sure you follow the gritted pathways allowing children to enter school via the main office (Year 1-4) and Wraparound entrance (Nursery and Reception). Please do not arrive early and do not let your child play on un-gritted/un-cleared areas before or after school.

Please take extreme care on your way to school and let the school office know as soon as possible if your child is unable to attend today.

Many thanks

Dear Parents

Please make sure you follow the gritted pathways allowing children to enter school via their usual allocated doors this morning. Please do not arrive early and do not let your child play on un-gritted/un-cleared areas before or after school.

Please take extreme care on your way to and from school.

Many thanks



## Starting School in September 2026!

### Applying for Places

**Nursery Application forms for places in September 2026** will be available on the school website and from the office from Friday 9th January 2026.

The closing date for applications is 27th March 2026 at noon.

Offer letters will be emailed out on Wednesday 1st April 2026.

The deadline for accepting a place is Friday 24th April.

#### Nursery visit dates

- ★ Tuesday 20<sup>th</sup> January 4:00pm
- ★ Wednesday 21<sup>st</sup> January 4:00pm
- ★ Thursday 22<sup>nd</sup> January 9:30am
- ★ Tuesday 27<sup>th</sup> January 4:00pm
- ★ Wednesday 28<sup>th</sup> January 4:00pm
- ★ Thursday 29<sup>th</sup> January 9:30am

#### Reception Applications for September 2026

Applications open: 1st September 2025

Applications close: 16th January 2026

National offer day: 16th April 2026

Further information can be found at

<https://www.newcastle.gov.uk/services/schools-learning-and-childcare/apply-school-place/applying-reception-places>

#### Middle School Applications for September 2026

Applications open: 1st September 2025

Applications close: 31st October 2025

National Offer Day: 2nd March 2026

Further information can be found at

[Applying for Transfer places | Newcastle City Council](#)

Mrs Lamb



#### St Aiden's Church Christmas Fair

Family fun with games, crafts, activities, Santa's Grotto and more - all within our traditional Christmas Fair.

We have a whole section of our fayre dedicated to family fun. With festive games, teddy tombola, lucky dip, crafts and activities there's sure to be fun for all the family. Our cafe is open for refreshments, there's a cake, bottle and Christmas stall to name only a few to appeal to adults.

Shhh, don't tell everyone but we happen to know Santa is going to make an appearance. For only £5 (needed to buy carrots for the reindeer) which is payable on the day, children will get an additional craft activity and a family visit to Santa in his Grotto where each child will receive a gift.

All you need to do is let us know your coming along (you can just arrive on the day but it would be handy to know how many children we need to plan for). If your wearing a Christmas jumper, Santa hat or any other festive attire, so much the better. Ho, ho, ho!

Please note - you can come along on the day without pre-booking, but if Santa has lots of children to see, those with bookings will take precedence.

<https://www.eventbrite.com/e/st-aidans-christmas-fayre-with-santas-grotto-tickets-1972847803889?aff=oddtcreator>



# Rainbow Wraparound

Bookings must be made during the booking window which opens on the 10<sup>th</sup> of each month and closes on the 20<sup>th</sup> of each month, for the following month.

	<b>Booking opens 12 noon</b>	<b>Booking closes 12 noon</b>
<b>October bookings</b>	September 10 <sup>th</sup>	September 20 <sup>th</sup>
<b>November bookings</b>	October 10 <sup>th</sup>	October 20 <sup>th</sup>
<b>December booking</b>	November 10 <sup>th</sup>	November 20 <sup>th</sup>
<b>January bookings</b>	December 3 <sup>rd</sup>	December 17 <sup>th</sup>
<b>February bookings</b>	January 10 <sup>th</sup>	January 20 <sup>th</sup>
<b>March bookings</b>	February 10 <sup>th</sup>	February 20 <sup>th</sup>
<b>April bookings</b>	March 10 <sup>th</sup>	March 20 <sup>th</sup>
<b>May bookings</b>	April 10 <sup>th</sup>	April 20 <sup>th</sup>
<b>June bookings</b>	May 10 <sup>th</sup>	May 20 <sup>th</sup>
<b>July bookings</b>	June 10 <sup>th</sup>	June 20 <sup>th</sup>

Parents must make their own bookings on the school cloud system. The only exception to this is families using vouchers. If you are emailing dates for voucher bookings, you must include

- Your child's name
- The day and date
- The sessions required (breakfast, until 5pm, until 6pm).

If you would like to, you can book sessions in advance for the entire school year.

If you do wish to book the same sessions for the entire school year, please email Mrs Carrick at [wraparound@gosforthpark.newcastle.sch.uk](mailto:wraparound@gosforthpark.newcastle.sch.uk)

Block bookings can only be made via email or through school cloud (not text message).

Please email [wraparound@gosforthpark.newcastle.sch.uk](mailto:wraparound@gosforthpark.newcastle.sch.uk) for any wraparound queries, **NOT the admin inbox or Mrs Carrick directly, as this will delay any response and may result in you missing the booking window.**

**Please ensure all block bookings are made/requested before the booking window closes. We cannot guarantee any block bookings after this date.**

If you have any queries, please do not hesitate to get in touch.

Thanks

Mrs Carrick

[wraparound@gosforthpark.newcastle.sch.uk](mailto:wraparound@gosforthpark.newcastle.sch.uk)

GPFS PTA PRESENTS OUR

# Wreath Making Workshops



**£40pp**  
including all materials  
and a festive treat.

Available to  
book via  
ParentPay

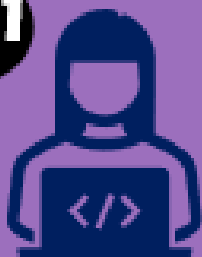
Saturday 29<sup>th</sup> November  
GPFS Community Room  
2 - 5pm or 5 - 8pm



# Applying for working parents' free childcare



1



Apply through the childcare service using:

<https://www.beststartinlife.gov.uk>

You will need to confirm your identify

If successful you will receive an eligibility code – '50xxxxxxxxx'



2

3



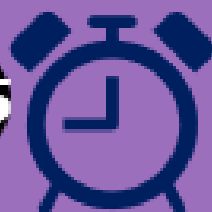
Take this code to your childcare provider with your NI number, child's date of birth and complete a Parent Declaration form

Your childcare provider checks the code is valid and if valid, confirms when you can start



4

5



Every three months, you **MUST** reconfirm your eligibility through your childcare account (helpline below)

Your 30-hour eligibility code has a validity end date.

**If you fail to reconfirm or become ineligible, you will stop receiving the free hours.**

**This is your responsibility.**

For support call the childcare service on

**0300 123 4097**

# SEND Support Hub 2025 Autumn Event



**26th November 2025**

**10am to 1pm**

**Galafield Family Hub,  
Newcastle upon Tyne, NE5 1LZ**



Come along to our **FREE** event. Find out about **education, health and social care services** available to children and young people with additional needs and/or disabilities. Chat with services to find out what they can offer. Plus there will be a free soft play for little ones.



**Arrive anytime. No need to book!**

**Scan the QR code to register your interest**

[localoffer@newcastle.gov.uk](mailto:localoffer@newcastle.gov.uk)



GPFS PTFA

# CHRISTMAS EVE BAGS

Available to buy on ParentPay  
until Friday 5th December

**STILL ONLY £5**

**EVERYTHING YOU NEED FOR  
FAMILY FUN THIS CHRISTMAS!**

Reindeer Food  
Christmas Sweet Treat  
Tree Decorations  
Christmas Activity Sheet  
Christmas Pencil  
Chocolate Lolly

Available to collect  
at Christmas  
Performances





# Non Uniform Day

Friday 5th December



Please help us to create our colourful prize hampers by coming to school in non uniform and donating an item of food/drink/toiletries etc. in that colour.

These hampers will then be raffled off at the corresponding Christmas Performances.

We appreciate all donations, thank you!



Please note any alcohol should be taken to the main office or handed straight to a member of staff and this will be a normal day of lessons for the children so no high heels and please also be wary of sending your child in expensive designer clothing which could become marked as a result of activities and play.



# What Parents & Educators Need to Know about TRACKING DEVICES

## WHAT ARE THE RISKS?

Bluetooth tracking devices like Apple's AirTag and Samsung's SmartTags have exploded in popularity, with millions sold each year. These small tools help people locate their lost items, but their discreet design has also made them attractive for more sinister purposes. From stalking to bullying, tracking devices present unique risks that trusted adults need to understand and address.

### STALKING AND HARASSMENT

Because of their tiny size and unassuming appearance, tracking devices can easily be hidden in bags or clothing. They've been used to monitor individuals without their knowledge, with a lawsuit in the US labelling AirTags "the weapon of choice of stalkers and abusers". In the UK, use of tracking devices in coercive control and stalking cases reportedly rose by 317 percent between 2018 and 2023.

### TOOLS FOR BULLYING

Tracking devices could allow bullies to follow or locate their targets even outside of school. This makes it difficult for children to find refuge, potentially extending the trauma of bullying into spaces – like home – that should feel safe and secure.

### FALSE ACCUSATIONS

Because tracking devices are linked to user accounts, they could be misused to 'prove' ownership of someone else's possessions. Someone could, for example, plant a tracker on another person's belongings to falsely claim them as their own.

### INVASION OF PRIVACY

These devices are designed to share location data with the user via other people's phones, which can unintentionally broadcast someone's movements without their consent. This makes them vulnerable to being monitored by strangers without realising.

### DIFFICULT TO DETECT

Many tracking devices are designed to be discreet, but that also means they're easy to hide. Without proactive checking or the right tech to detect them, children and young people might not realise they're being tracked.

## Advice for Parents & Educators

### WATCH FOR WARNING SIGNS

If a child's peers always seem to know their location – whether in person or hinted at online – it could be worth checking for tracking devices. Some, like AirTags, will eventually make a noise if separated from their owner. Listen out for a chirping sound.

### CHECK LIKELY HIDING SPOTS

Common places where trackers may be planted include jacket linings, bag seams, pockets, or under bike seats. If you find one, take a photo of the serial number before disposing of it – this could help police trace the account it's linked to.

### USE DETECTION APPS

Apple devices running iOS 14.5 or later will notify users of unknown AirTags nearby. Android users can install Apple's 'Tracker Detect' or the third-party app 'AirGuard' to scan for tracking devices from various manufacturers.

### HAVE THE CONVERSATION

Talk to your child about what tracking devices are, what signs to look out for, and how they might be misused. Emphasise the legal consequences of using them to prank, harass, or monitor someone.

### Meet Our Expert

Alan Martin is a seasoned technology journalist with bylines in Wired, TechRadar, The Guardian, The Evening Standard, The Telegraph, and The New Statesman. He specialises in consumer tech, online safety, and emerging risks in the digital landscape.



The National College®