



www.gosforthpark.newcastle.sch.uk

March 22nd 2024 Issue 4 Spring Term 2

Important Site Updates

Dear Parents

We are very excited about the upcoming move, expanding into the new part of our GPFS home. The painting is done and the lights are in - we can't wait for another peek!

Next Tuesday morning, our KS2 and KS1 School Council will be having another tour of the building. I'm sure they'll see a huge difference since last time! We'll ask them to take some photos and will share these in next week's newsletter.

We have been working with the building team on the final logistics of the move. Operations next term will be challenging as we are at different ends of the school, with building works taking place in the middle.

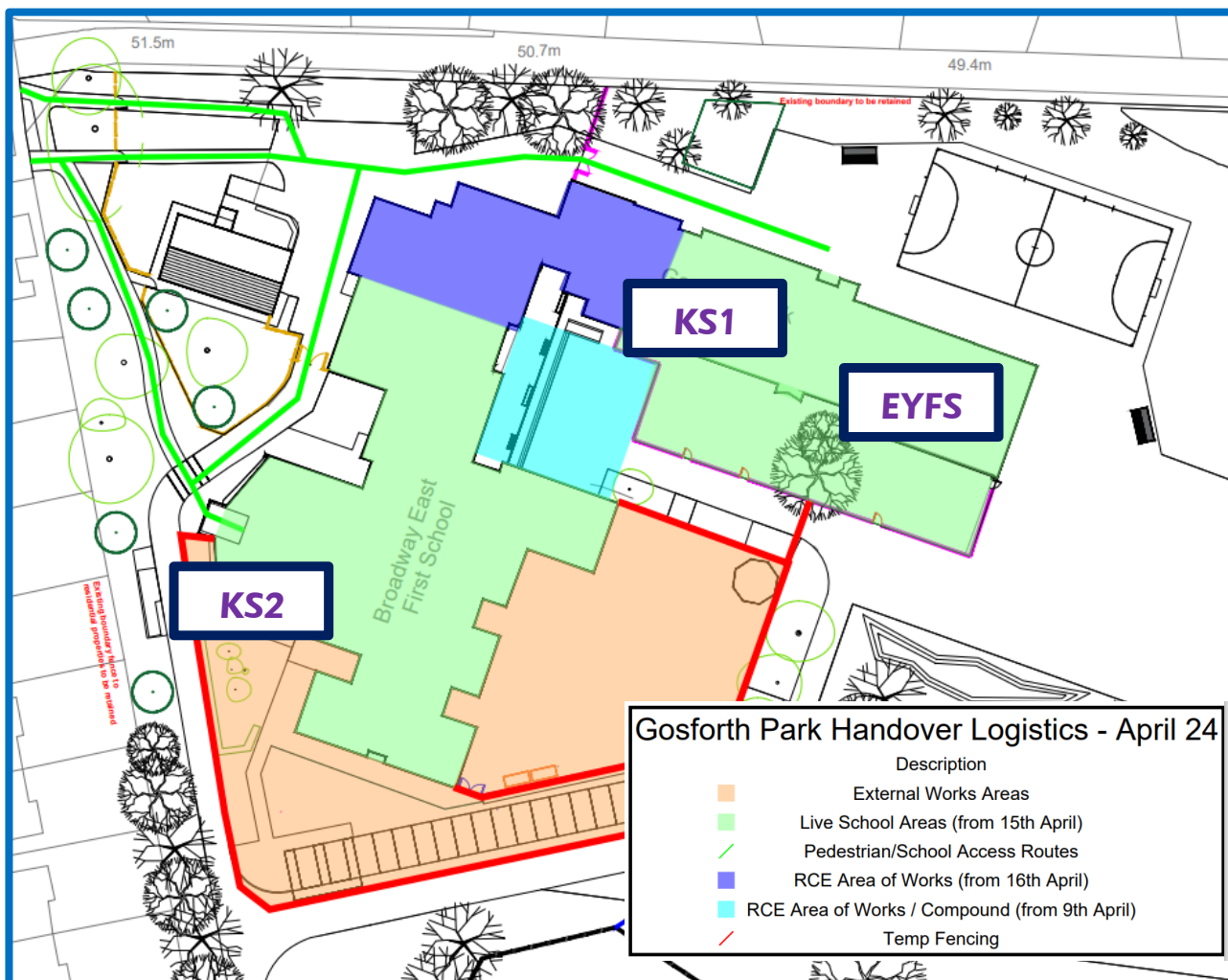
Please help us **by reading the following information very carefully** and bearing with us on the first few days of next term until we get used to the new system. We will make any tweaks as necessary – it will be new to us all!

Mrs Lamb

PLEASE

- Make sure scooters and bikes are dismounted at the very first set of school gates
- Do not ride scooters/bikes until you are off the school site
- Keep to the left when walking through gates and along pathways
- Drop-off and collect on time
- Avoid appointments during the school day where possible
- If children need to be taken out early for appointments please collect before 3pm
- There will be no collections between 3:00 and 3:30pm.
- Notify the office or your child's class teacher **in the morning** if your child is going to be collected by someone else. We do not want to delay collection but will not let your child go home with someone else unless we have been notified.
- If you need to bring **medication** to school, please bring this to **the new main office via the new entrance at 8:45**

Until works are complete, children will have to be escorted by a member of staff from one end of school to the other. Staff are needed in classrooms to support children with their learning.



Please see below for information about your child's entrance

Parents with children in EYFS/KS1 and KS2

AM: Please drop off the youngest children first in Nursery, Reception or KS1 via the usual doors then make your way round to the new entrance to drop off KS2 pupils.

PM: Please collect the oldest children first via the new entrance then make your way round to the main playground to collect EYFS/KS1 pupils.

Parents with children **only in Nursery, Reception, Green, Orange or Yellow Class**

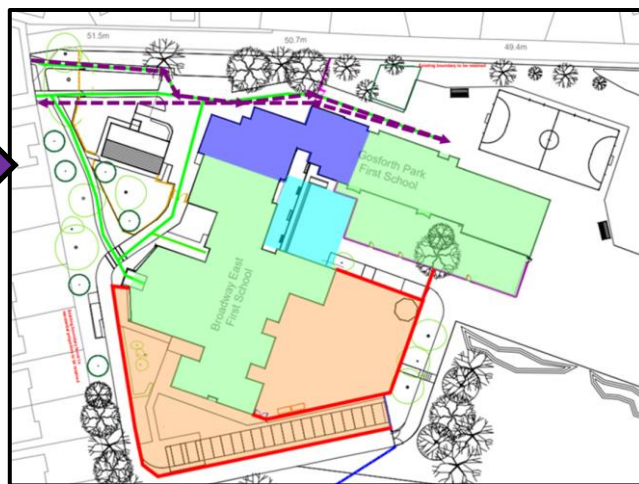
Please arrive and pick up at the usual time and place.

Parents with children **only in Indigo, Violet or Blue Class.**

Please arrive and pick up at the new school entrance. Follow the new path past the bungalow.

Parents with children in Wraparound.

Please arrive and pick up at the new Wraparound entrance. Follow the new path past the bungalow and take a slight left. will be yet!



Important Updates continued...

Clubs

Children attending outdoor after school clubs can be collected at the double green gates as usual.



PLEASE also note:

Bikes and Scooters

Can either be parked in the usual racks – gates will be locked during the school day
OR

In the bike rack opposite the new entrance – these are left at your own risk.

Lexia Reading Club will not be on during the first week of term as we're not quite sure where the PCs will be yet!

We will get this up and running in the second week back.

Thank you for your patience and support. Please do not hesitate to contact us if you have any questions about the new arrangements.

Kind regards

Mrs Lamb



Robinwood 2024

What a fantastic, muddy, exciting, wet, exhilarating, confidence-building, fun, exhausting and unforgettable experience!

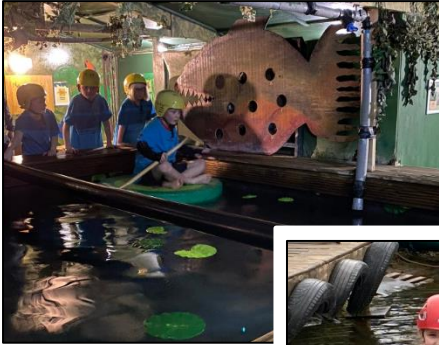


We would like to thank every one of our Year 4 pupils for demonstrating such brilliant determination, teamwork, bravery and (above all) kindness over the last three days.

A massive Gosforth Park thank you to Mrs Wilson, Miss Pope, Miss Walsh, Miss Bolton, Mr Patterson and Mrs Lamb for giving our children an experience that they will never forget.

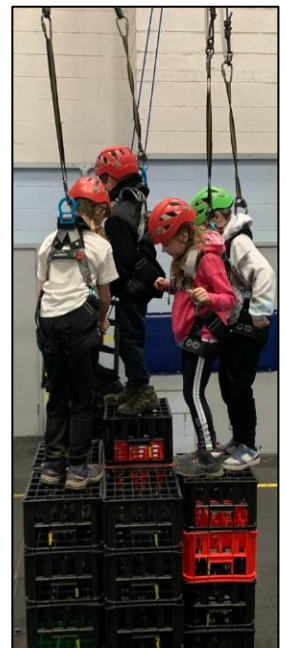
We cannot wait to invite parents to school to celebrate your child's individual achievements at our famous **Robinwood Presentation Evening** (details TBA)

Check out our Twitter (X) page for more photographs! [@GosforthPark1st](https://twitter.com/GosforthPark1st)



Robinwood 2024

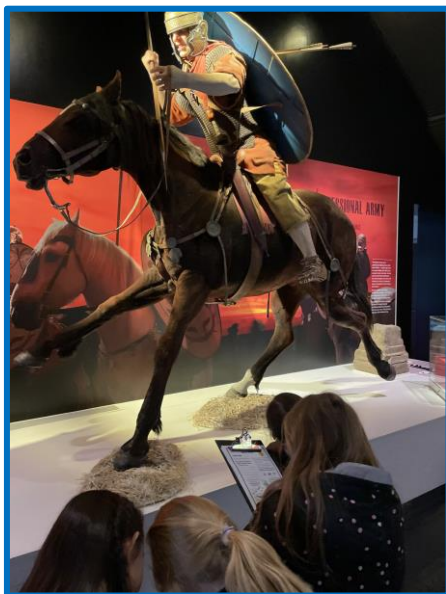
We are so proud of our incredible children



VINDOLANDA CHARITABLE TRUST

KS2 Vindolanda Trip

Last Thursday KS2 braved the windy fields of Northumberland to visit Vindolanda Fort and Roman Army Museum. We had a lesson led by a virtual Roman teacher and used a map to explore the Vindolanda site while using our excellent knowledge to solve puzzles.



A big thank you to all of the pupils, staff and parent volunteers for making this experience possible!

Mr Hindess

Reminder

Please be reminded that the last day of Spring Term is Thursday 28th March.

We return to school on **Tuesday 16th April**

PTFA Meeting

Next meeting:

Tuesday 7th May from 6:15 - 7:15pm in the brand new community room!

The Children's Additional Needs Network

Marketplace Event Wednesday 3rd April 2024 10am - 2pm at Hadrian School, Newcastle Upon Tyne, NE15 6PY

The NECANN Marketplace is an event for Parents & Carers of children with additional needs and their families. The event is to help families explore what support and resources are available to them in the North East region. There will be a range of activities for children to take part in throughout the day:

- Inclusive sports clubs demonstrations
- NECANN members showcasing their services including therapies, aids/ equipment, charities & more
- Sensory room and activities
- Music, rebound Therapy, Face Painter and more

If you would like to attend the event please email NECANN to the address below.

Visit www.northeastcann.org
<https://hadrian.newcastle.sch.uk/parents/school-events/>

Email info@northeastcann.org



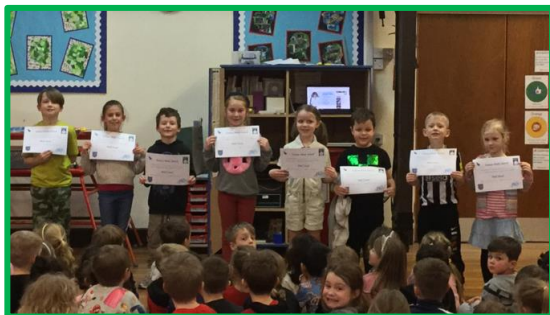
Help kids boost their happy hormones this Spring!

Please follow the link below to access the Spring edition of the Kalmer & DOSE magazine [Spring into Happiness \(dosemagazine.co.uk\)](http://dosemagazine.co.uk)

Mrs Lamb

Congratulations!

Well done to our **scientists of the week!** You were all chosen for your excellent contributions to Science week.
Miss Pope



'At the Movies'



A huge well done to our GPFS stars Heidi, Ava, Isla, Alice, Nydia and Imogen who are taking part in their 'At the Movies' dance show this weekend- Good luck girls!

Congratulations!

We are very proud of our **talented swimmers** at Gosforth Park! A massive well done to Jack for achieving 200m and Teddy for following in his big brother's footsteps and earning his 5m badge!



Freya has also been working hard in the pool and has achieved her stage 5 swimming badge. Well done Freya, we are very proud of you!



KS2 Computing Workshops

This week, pupils in KS2 enjoyed an exciting computing and programming workshop led by Julian from GEM education.

Linked to our Romans topic, children designed, built and programmed their own remote-control chariots!



Thank you so much to Julian from GEM education for delivering this exciting and challenging project!

The KS2 Team



Thank you and well done to all of our families who have taken part in this year's Big Walk and Wheel.

Of course, the aim of the initiative is not for all of your efforts to end here. The traffic, pollution, and road safety in our local area continues to be important to us and we know that our children care about the environment too.

We hope you can continue to partake in active travel as much as possible to contribute towards our children's healthy lifestyles as well as improving road safety and the pollution levels around our school.

Mrs Wells



GEMS Production

On Monday, our Year 4 pupils were invited to attend Gosforth East Middle School's performance of High School Musical.

We really enjoyed watching some of our ex-GPFS pupils perform so confidently. I am sure that the experience will have inspired some of our Year 4s to follow in their footsteps next year!

A big thank you to the staff at GEMS who made this possible!

Mr Patterson / Miss Bell

Pre-Loved Uniform

PRE-LOVED ITEMS WE CAN SELL		PRE-LOVED ITEMS WE CAN NOT SELL
OFFICIAL SCHOOL JUMPERS	£2.50	NON – OFFICIAL JUMPERS
OFFICIAL SCHOOL CARIGANS	£2.50	NON – OFFICIAL CARIGANS
OFFICIAL SCHOOL POLOS	£1.50	NON – OFFICIAL POLOS
GIRLS CHECKED DRESSES	£1.50	GREY BOYS TROUSERS
GREY PINAFORES	£1.50	GREY TAYLORED GIRLS TROUSERS
GREY SKIRTS	£0.50	GREY BOYS SHORTS
GREY GIRLS SOFT TROUSERS	£0.50	DAMAGED OR MARKED ITEMS
SCHOOL BAG (NEW STYLE)	£2.50	
SCHOOL BAG (OLD STYLE)	£1.50	
OFFICIAL PE T-SHIRT/SHORTS	£0.50	

Items are sold from 1 Park Drive, Melton Park NE3 5QB, with a drop off box at the front door. Please REMEMBER items, particularly red, must not be marked as they are unable to be sold on. You can text me Natasha Davy (Parent) on 07736276653. All money made comes back to school to be spent on playground equipment for our wonderful children.

Attendance

Our whole school attendance to date this academic year is **96.4%** up on **95.6%** last year.

Our classes of the week are **REC SC** with **99.7%** and **Orange** with **99.2%**

Well done everyone!

Mrs Lamb



We love looking at our TTRS stats and seeing our average answer time getting faster and faster! Out of 30 local schools, we are currently an incredible **9th place!**

1	Great Park Academy, Newcastle-upon-Tyne	2.31
2	Havannah First School	2.55
3	Newcastle School for Boys, Newcastle-upon-Tyne	2.69
4	Gosforth East Middle School	2.79
5	Hazlewood Community Primary School	2.84
6	Kingston Park Primary School, Newcastle-upon-Tyne	2.93
7	Kenton Bar Primary School	3.12
8	St Bartholomew's Church of England Primary School, Newcastle Upon Tyne	3.45
9	Gosforth Park First School, Newcastle-upon-tyne	3.53
10	West Jesmond Primary National Teaching School	3.63
11	St Charles' RC Primary School, Newcastle-upon-Tyne	3.91
12	Benton Dene Primary School	3.95
13	Balliol Primary School, Newcastle-upon-tyne	3.99
14	Archbishop Runcie First School, Newcastle Upon Tyne	3.99



Another fantastic week on Numbots for Gosforth Park First School! Below are our top coin earners. Well done everyone!

Our top coin earners this week are:

Blue – Alex T

Violet – Harper D

Indigo – Elia S

Yellow – Olly R

Orange – Alanna T

Green – George K

Reception (Miss Parsons Munn) – Rosalyn R

Reception (Miss Coughlan) – Martha H

Advanced Notice of Dates 2023-2024

Updates will be added in red

Thursday 28 th March	Last day of term
	Easter Holiday
Monday 15 th April	School Closed
Tuesday 16 th April	School reopens
Monday 29 th April	Reception Healthy Active Lifestyle Event
Wednesday 1 st May	KS1 Trip to Washington Wetlands
Monday 6 th May	May Bank Holiday
Wednesday 8th May	Y2 Safety Works Trip 1-3pm
Friday 10th May	Y4 Safety Works Trip 10-12
Sunday 19 th May	Children's Cancer Run
Friday 24 th May	Daft Day
Friday 24 th May	Last Day of Term
	May Half term Holiday
Monday 3 rd June	Training Day
Friday 7 th June	Wear Wellies Day
Wednesday 12 th June	Year 4 Multiplication Tables Check
Friday 21 st June	KS2 Big Gig 'Hello Sunshine'
Tuesday 25 th June	Hoopstarz
Monday 1 st July	Year 4 Leaver's Video Filming
Wednesday 3 rd July	Year 4 transition to GEMs
Thursday 4 th July	Year 4 transition to GEMs
Thursday 4 th July	In school transition to new classes
Friday 5 th July	Year 4 transition to GEMs
Thursday 11 th – Friday 12 th July	Mr H Onsite Residential for Year 3 children
Friday 19 th July	Last day of term

School Closed Monday 15th April

Staff Training Days

Staff Training Days for GST schools this academic year will be:

- Monday 3rd June 2024

Rainbow Wraparound

Please contact us via

wraparound@gosforthpark.newcastle.sch.uk

or for any ad hoc bookings

Rainbow Wraparound: 07926 946 565.



If you don't already, please give us a follow on Twitter. Our school account is @GosforthPark1st



After School Club



Follow us on Facebook
[@mrhoutdoorexperiences](https://www.facebook.com/mrhoutdoorexperiences)

Mr H is BACK at Gosforth Park First School in April 2024! Mr H will be providing 1 night of after school club over 3 weeks, in April for KS1 and KS2 children.



- * Tuesday 16th, 23rd & 30th April 2024
- * The cost is £20 for the 3 weeks in total
- * Clubs are from school finishing time until 5pm



- * Children will complete activities such as: orienteering; lighting fires; cooking on fires; clay puppet shows; making clay pots; archery; tug'o'war; bug hunts; art in the environment; discovering the natural environment; and traditional outdoor games
- * **Contact—mrhoutdoorexperiences@yahoo.com for a place on the club and to receive payment details.**
Please provide your child's name and year group.



Signs of Spring

PHOTO COMPETITION

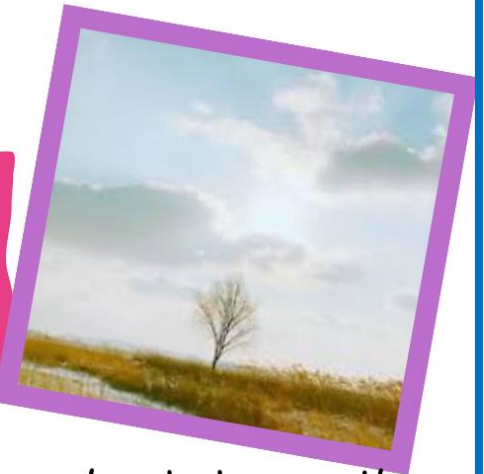
Take a picture to show signs of spring.

COMPETITION
DEADLINE

APRIL 26

WINNERS
ANNOUNCED

MAY 03



Email or hand in your photograph to your school along with your name and year group. A school winner will be selected for EYFS, Years 1&2, Years 3&4, Years 5&6 and Years 7&8.

A GST winner will be selected for each group.



Show your
photography skills to win a prize.





JOIN IN THE FUN WITH
OUR GPFS PTFA



Easter Egg Competition

£1 TO ENTER
VIA PARENT
PAY



DECORATE A BOILED EGG AND
BRING IT INTO SCHOOL ON
WEDNESDAY 27TH MARCH
FOR THE CHANCE TO WIN A
FAMILY BOWLING VOUCHER
OR CHOCOLATE EASTER EGG

