



www.gosforthpark.newcastle.sch.uk

November 17th 2023 Issue 2 Autumn Term 2

Maisie Chan Author Visit



We are delighted that as part of our prize for winning the Summer Reading Challenge – best-selling author Maisie Chan will be visiting **KS1 and KS2 on 29th November 2023**.

This is part of the 40th annual Northern Children's Book Festival and children will have the opportunity to buy signed copies of her book *Tiger Warrior: Battle for the Jade Rabbit*!

Maisie Chan is a British Chinese children's author who won multiple awards for her debut novel in 2022, and her *Tiger Warrior* books are an exciting action-adventure series about the magical power of the Chinese Zodiac.

There is no obligation to buy books as part of this event, but we will be sending out information via parent pay if you would like to have a book signed.

Mrs Lambert



What a brilliant spotty day we have had raising money for Children in Need. Everyone has been very busy with their Pudsey-themed activities in classes!

We were even surprised with a visit from the famous bear himself.

Thanks to your generosity, Gosforth Park has so far raised an amazing **£302.50**

A massive thank you to Michelle from ASDA who brought our special guest to see us!



Clubs Autumn 2

Following on from our wonderful school council surveying their classes to find out what clubs their class mates would like on offer, children have the chance to join a variety of clubs from next week should they wish to do so.

Places are limited but we will try to ensure that every child who wants to be involved can take part in at least one club of their choice. If we cannot allocate every child a club this time, they will be placed on a waiting list and will have a turn in the following Spring half term.

To help us allocate places please help your child to complete the form below by **4pm on Sunday 19th November**. All children will be notified as to which club they have been allocated next week.

<https://forms.office.com/r/NN379MbNVR>

Reception Clubs



EYFS **Outdoor Games Club** with Miss Coughlan Wednesday lunchtime



EYFS **Music and Movement Club** with Mrs Wells Wednesday lunchtime



EYFS **Funky Fingers Club** with Miss Parsons-Munn Wednesday lunchtime

Green/Orange Class Clubs



Green/Orange **Nature Art** with Miss Pope Tuesday lunchtime



Green/Orange **Board Games** with Mrs Lamb Monday lunchtime



Green/Orange **Library and Reading Club** with Mrs Lambert Monday lunchtime



Green/Orange **Craft Club** with Mrs Armstrong Thursday lunchtime

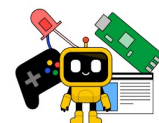
Yellow/Indigo/Violet/Blue Class Clubs



Yellow/Indigo/Violet/Blue **Dance** with Miss Walsh Thursday lunchtime



Yellow/Indigo/Violet/Blue **Debate** with Mr Hindess Friday lunchtime



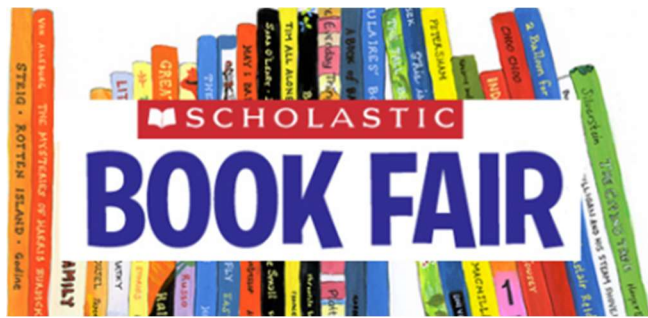
Yellow/Indigo/Violet/Blue **Coding** with Miss Bell Monday lunchtime



Yellow/Indigo/Violet/Blue **Times Table Rock Stars** with Mr Patterson Wednesday lunchtime



Yellow/Indigo/Violet/Blue **Mindfulness Colouring** with Mrs Lamb Monday lunchtime



We're delighted to be welcoming the Scholastic Book Fair into school on **Wednesday 15th November until Tuesday 21st November** - every day straight after school at 3.30pm in the library.

There will be over 200 books available to buy, from award-winners and new releases to beloved favourites and bestsellers, all at amazing prices. There are lots of books available for as little as £2.99. Most importantly, for every book you buy, we earn free books for our school!

There is a cashless system in operation. You can scan the QR code on the day or go to:

www.bookfairs.scholastic.co.uk/pay and just type in the name of our school to pay.

Thank you to everyone who has visited the book fair so far!

I'm looking forward to seeing you all and thank you so much to our parent helpers who have volunteered to help us for the remaining days.

Mrs Lambert

Christmas Holiday

We break up for Christmas on **Friday 22nd December**, returning on **Monday 8th January**.



Healthy School

It can be tempting to travel to school by car more in winter as the weather becomes more unsettled but don't let the cold and dark put you off! It can be exhilarating to have a little cold air or rain to freshen you up as long as you are kitted out suitably with warm clothes and accessories! There can be extra things to bear in mind, including making sure you and your children are visible (as mentioned last week). Autumn leaves can make footpaths slippery and we may need to be more alert for our children's safety and keep them closer to us, as it can be harder to spot hazards in low light. It is also a good idea to keep on top of bike and scooter maintenance, keeping them clean and free of dirt and grit. Our children may need additional reminders about road safety - where, when and how to cross the variety of different road crossings we have in our area - with our adults. Stay safe!

Mrs Wells



Thanks to those of you who were able to make out meeting on Monday.

Our next PTA meeting will be held in the school hall on **Monday 22nd January** from 6:15pm. We look forward to seeing you there!

Applying for Places

Please apply on time to avoid disappointment. We are currently full with waiting lists in all year groups.

Nursery Application forms for places in September 2024 will be available on the school website and from the office from Friday 12th January 2024

The closing date for applications is 15th March 2024.

Offer letters will be emailed out on 22nd March 2023.

The deadline for accepting a place is Friday 19th April.

Reception Applications for September 2024

Applications open: 1 September 2023

Applications close: 15 January 2024

National offer day: 17 April 2024

Further information can be found at

<https://www.newcastle.gov.uk/services/schools-learning-and-childcare/apply-school-place/applying-reception-places>

Parents are able to visit the school on the following dates. Please phone the school office to book a place.

Wednesday 22nd November 5:15 – 6:15pm

Mrs Lamb



Squishmallows

There is a new craze of **squishmallows** sweeping through school at the moment, causing a path of destruction and disagreements as it passes! Could I please kindly ask that all squishmallows remain at home in the future?

Thanks for your support!

Mr Hindess

Busy Week in KS2...

Next week **KS2 Classes** will be completing their rearranged **Geography Fieldwork** on Gosforth Highstreet.

Monday 20th – Indigo Class Geography Fieldwork

Wednesday 22nd – Violet Class Geography Fieldwork

Thursday 23rd – Blue Class Geography Fieldwork

Please can I remind everyone to wear appropriate outdoor clothing and to bring their packed lunches in a backpack, as we will be walking!

Any questions, please do not hesitate to contact me! Mr Hindess

Pre-Loved Uniform

PRE-LOVED ITEMS WE CAN SELL		PRE-LOVED ITEMS WE CAN NOT SELL
OFFICIAL SCHOOL JUMPERS	£2.50	NON – OFFICIAL JUMPERS
OFFICIAL SCHOOL CARIGANS	£2.50	NON – OFFICIAL CARIGANS
OFFICIAL SCHOOL POLOS	£1.50	NON – OFFICIAL POLOS
GIRLS CHECKED DRESSES	£1.50	GREY BOYS TROUSERS
GREY PINAFORES	£1.50	GREY TAYLORED GIRLS TROUSERS
GREY SKIRTS	£0.50	GREY BOYS SHORTS
GREY GIRLS SOFT TROUSERS	£0.50	DAMAGED OR MARKED ITEMS
SCHOOL BAG (NEW STYLE)	£2.50	
SCHOOL BAG (OLD STYLE)	£1.50	
OFFICIAL PE T-SHIRT/SHORTS	£0.50	

Items are sold from 1 Park Drive, Melton Park NE3 5QB, with a drop off box at the front door. Please REMEMBER items, particularly red, must not be marked as they are unable to be sold on. You can text me Natasha Davy (Parent) on 07736276653. All money made comes back to school to be spent on playground equipment for our wonderful children.

Attendance

Our whole school attendance to date this academic year is **97.5%** up on 96.8% last year.

Our classes of the week are **Yellow Class** with **99.7%** and **Indigo Class** with **97.8%**

Well done everyone!

Mrs Lamb



GPFS had 92% accuracy this week when playing TTRS which is a super statistic.

Yellow class you had 98% accuracy this week!

Well done to **Ava Underhay** and **Lauren Saul** who earned the most coins this week.



Our school activity average has gone up this week so great job everyone! Well done to **Violet** and **Green** class who had our top participation!

Remember to earn stars you must be speedy as well as accurate so don't be discouraged if you are not getting three stars every time, keep working to improve your speed.

Our top coin earners this week are:

Blue – Elsie Gumbrill

Violet – Freya Oliver-Gow

Indigo – Toby Smith

Yellow – Rory Gill

Orange – Thea Turnbull

Green – George Kasis

Miss Pope

Advanced Notice of Dates 2023-2024

Updates will be added in red

Summer Holiday	
Monday 20 th November	Indigo Class Geography Skills and Fieldwork
Tuesday 21 st November	Blue Class SCHOOL TRIP to Victoria Tunnel and Seven Stories
Wednesday 22 nd November	Violet Class Geography Skills and Fieldwork
Thursday 23 rd November	Blue Class Geography Skills and Fieldwork
Wednesday 29th November	KS1 and KS2 Author Visit Maisie Chan
Thursday 30 th November	Indigo Class and Violet Class SCHOOL TRIP to Victoria Tunnel and Northern Print
Wednesday 13 th December	Nursery Christmas Assembly 9:30 – 10:00 (up to 4 guests per family)
Thursday 14 th December	Reception to Year 4 Aladdin at The Exchange Theatre
Monday 18 rd – Friday 22 nd	Year 4 Swimming
Tuesday 19 th December	Reception Miss Coughlan Christmas Assembly for Parents 10:45 – 11:15 (up to 4 guests per family)
Tuesday 19 th December	Reception Christmas Assembly for Parents 2:30 – 3:00 (up to 4 guests per family)
Wednesday 20 th December	Green Christmas Assembly for Parents 9:30 – 10:00 (up to 4 guests per family)
Wednesday 20 th December	Orange Christmas Assembly for Parents 10:45 – 11:15 (up to 4 guests per family)
Wednesday 20 th December	Yellow Christmas Assembly for Parents 2:30 – 3:00 (up to 4 guests per family)
Thursday 21 st December	Blue Christmas Assembly for Parents 9:30 – 10:00 (up to 4 guests per family)
Thursday 21 st December	Violet Christmas Assembly for Parents 10:45 – 11:15 (up to 4 guests per family)
Thursday 21 st December	Indigo Christmas Assembly for Parents 2:30 – 3:00 (up to 4 guests per family)
Friday 22 nd December	Last Day of Term
Christmas Holiday	

Advanced Notice of Dates 2023-2024

Updates will be added in red

	Christmas Holiday
Monday 8 th January	School reopens
Tuesday 6 th Feb	Safer Internet Day
Friday 16 th February	Last day of term
	February Half Term Holiday
Monday 26 th February	School reopens
Monday 11 th –Friday 15 th March	Science Week
Friday 15 th March	Red Nose Day
Wednesday 20 th March – Friday 22 nd March	Year 4 Robinwood
Thursday 28 th March	Last day of term
	Easter Holiday
Monday 15 th April	School reopens
Monday 6 th May	May Bank Holiday
Friday 24 th May	Daft Day
Friday 24 th May	Last Day of Term
	May Half term Holiday
Monday 3 rd June	Training Day
Thursday 11 th – Friday 12 th July	Mr H Onsite Residential for Year 3 children
Friday 19 th July	Last day of term

Staff Training Days

Staff Training Days for GST schools this academic year will be:

- Monday 3rd June 2024



Rainbow Wraparound

Please contact us via wraparound@gosforthpark.newcastle.sch.uk or for any ad hoc bookings

Rainbow Wraparound: 07926 946 565.



If you don't already, please give us a follow on Twitter. Our school account is @GosforthPark1st

What Parents & Carers Need to Know about

SMART TVs

Smart TVs connect to the internet without the need for a set-top box or streaming device, letting users access a range of features through the TV set itself, from on-demand content apps like BBC iPlayer to streaming services such as Netflix, as well as connecting to smartphones and other wireless devices. Most new televisions are internet enabled – so whether you're thinking of upgrading your home viewing system or buying an additional TV for your child's room, it's now even more important to consider the online safety aspects.

WHAT ARE THE RISKS?

AGE-INAPPROPRIATE CONTENT

From Netflix to Disney+ to Prime Video, there is a plethora of streaming services available. While these services offer content catering for younger viewers, they also provide material for more mature audiences. If you don't have parental controls set up on your accounts, your child could find themselves being exposed to shows and movies with adult themes, strong language and violence.

CENSORED

INCREASED SCREEN TIME

The array of content available through smart TVs could lead to your child spending excessive amounts of time in front of the screen. Not only can prolonged screen time distract from important activities such as schoolwork or exercise, but experts have also warned that endless hours in front of the box can lead to health problems including obesity, poor sleeping patterns and depression.

REMOTE-CONTROL RETAIL

Like many online devices, smart TVs facilitate digital purchases: buying a new app or the latest season of a favourite show, for example. If your child has access to a bank card and isn't restricted by spending controls on the system, they could run up a sizeable bill through a smart TV fairly quickly – especially if they're not quite old enough to fully appreciate the value of money.

UNCONVINCING SECURITY

As Internet of Things (IoT) devices, smart TVs can be uniquely vulnerable to attack. Experts warn that internet-enabled TVs tend not to support high-level security software, so you won't always be able to download strong antivirus programmes like you would on a phone or computer. Being targeted by hackers could be deeply upsetting for your child, as well as putting their personal data at risk.

A SILENT SPY?

Some smart TVs already collect data on users' viewing habits and then display targeted advertising based on that personal information – while there have also been reports of internet-enabled TVs (and the apps installed on them) being used to 'eavesdrop' on owners. In models with a built-in microphone (for voice activation), third parties could potentially listen in on someone's home life.

CONTACT FROM STRANGERS

Many smart TVs can be used for web browsing, social media and live streaming – all of which could allow unknown users to contact your child (or vice versa). If your child engages with these functions of the TV, a stranger could potentially discover their contact information and potentially then use it to obtain even more sensitive personal details, such as your home address.

Advice for Parents & Carers

MAKE IT A FAMILY THING

Family TV time is a great way to model the responsible enjoyment of technology – showing your child how to use the smart TV safely for when they're old enough to watch it independently. You could also take this opportunity to establish some healthy TV boundaries, such as time limits on their daily viewing or how to make sure they're only watching content that's appropriate for their age.



CREATE CHILD PROFILES

Much like with smartphones and tablets, apps can be downloaded onto smart TVs: from free content platforms such as BBC iPlayer to paid-for services like Prime Video. Most of these apps allow you to create a separate account for your child which has different settings to your own – suggesting more child-friendly material and reducing the possibility of them viewing explicit content.



SET UP PARENTAL CONTROLS

It's likely that your smart TV has built-in parental controls, which not only let you filter out age-inappropriate shows, movies and games but can also restrict in-app purchasing, so your child can't accidentally spend money through the device. When you've enabled these safeguards, have an open conversation with your child about the reasons, helping them to understand the potential risks.



CONSIDER THE LOCATION

If you're concerned about the online safety hazards that a smart TV might pose to your child, you could consider where in your home you put the device. The safest option would be to place the smart TV in a shared family space – so that an adult is usually nearby and able to supervise while your child's watching it – rather than in the relative privacy of a bedroom.



Meet Our Expert

Carly Page is an experienced technology journalist with a track record of more than 10 years in the industry. Previously the editor of tech tabloid *The Inquirer*, Carly is now a freelance technology journalist, editor and consultant.



NOS National Online Safety®
#WakeUpWednesday



@natonlinesafety



/NationalOnlineSafety



@nationalonlinesafety



@national_online_safety

Users of this guide do so at their own discretion. No liability is entered into. Current as of the date of release: 15.11.2023