



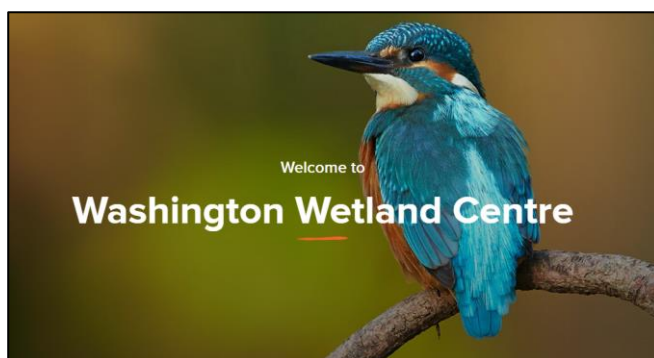
www.gosforthpark.newcastle.sch.uk

May 6th 2022 Issue 2 Summer Term 1



Our lovely school photographer will be in school next Wednesday to take class photos. Bring your best smile!

KS1 Washington Wetlands



Please remember that Key Stage One will be visiting Washington Wetlands all day on **Tuesday 10th May** next week.

We will be outside whatever the weather so school uniform (with appropriate outdoor trousers), warm coat and wellies or walking shoes/boots will be needed.

Thank you to the parent helpers who have volunteered to give up their time to help us with our trip.

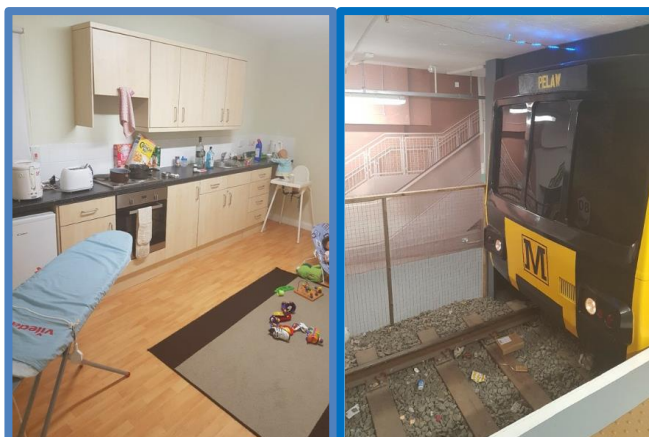
The KS1 Team

Safety Works!

What exciting week our Year 4 children have next week! Not only do they start their swimming lessons but on Tuesday they are off to Safety Works for the afternoon. Safety Works is a multi-agency interactive safety centre serving the community of Tyne and Wear. They provide innovative, enjoyable learning experiences, illustrating every day hazards and how to prevent them.

Their partners include Northumbria Police, British Transport Police, Nexus who run the Metro system, Local Authority Road Safety teams, St John Ambulance and RNLI.

Here's a sneaky peek of what to expect!





Jubilee Picnics

PTFA are looking for lots of volunteers for each picnic afternoon to help sell cakes, tea and coffee and do a raffle. If we have lots of helpers it will mean parents will all still be able to spend time with their own children on their picnic afternoons.

Please advise Laura Greenhill on the number below, or the school office if you can help on the day by Friday the 13th of May

We are also looking for donations of raffle prizes. These can be dropped off at reception by Friday the 13th of May. Donations could be anything from chocolate, wine or exciting days out or vouchers. (Anything people can get from their work place if it's a place of interest e.g. crazy golf, golf day, soft play voucher).

We also need lots of cake donations for each afternoon for each key stage for 17th May, 18th May or 19th of May. Homemade or bought nut free cake donations are very welcome. These can be brought in from Monday 16th May or given to the office the day before or morning of the picnic which they're to be used for.



Year 4 leavers' mugs will be on sale by the PTFA at the KS2 picnic for £6 each with all profits going back to the PTFA.



PTFA also need to recruit a new chair and other PTFA members for our lovely PTFA as soon as possible. Many of us are leaving this school as our children are in Year 4 and will be moving to GEMS in September.

The chair person, along with other members, will coordinate, organise and arrange events to raise money for our school which helps towards any area to enhance our children's experience within school. The PTFA work as a team.

Please contact Laura Greenhill (current chair of PTFA) on 07930825114 if you are interested.

KS2 Planning and Decision Making

Challenge

Decision Making: Location

Use the maps and information to choose which location would be most suitable for the new windfarm.



You must **justify** your decision using several reasons in order to convince the local community



As part of our Go Green topic, children in Key Stage Two have been introduced to the concept of Planning and Decision Making (an important part of Geography!)

This week we worked as teams to plan the most appropriate location for a new onshore windfarm along the Northumberland coastline! Children especially enjoyed learning about the different perspectives of local residents and how these viewpoints needed to be considered. Here are some of our future decision makers in action:



KS2 Swimming

Please remember that Year 4 children are attending swimming lessons next week on **Monday, Wednesday, Thursday and Friday**

Children will be walking to and from the pool, leaving school at 12:55 and returning to school for the end of the day.

Please see all additional information in last week's newsletter.

Mrs Lamb

PRE-LOVED UNIFORM

Here is a reminder of the items I hold and sell. All funds are returned back to the school for playground equipment etc.

This is such an important supply of money, please support when you can!

PRE-LOVED ITEMS WE CAN SELL	
OFFICIAL SCHOOL JUMPERS	£2.50
OFFICIAL SCHOOL CARIGANS	£2.50
OFFICIAL SCHOOL POLOS	£1.50
GIRLS CHECKED DRESSES	£1.50
GREY PINAFORES	£1.50
GREY SKIRTS	£0.50
GREY GIRLS SOFT TROUSERS	£0.50
SCHOOL BAG (NEW STYLE)	£2.50
SCHOOL BAG (OLD STYLE)	£1.50
OFFICIAL PE T-SHIRT/SHORTS	£0.50
PRE-LOVED ITEMS WE CAN NOT SELL	
NON – OFFICIAL JUMPERS	
NON – OFFICIAL CARIGANS	
NON – OFFICIAL POLOS	
GREY BOYS TROUSERS	
GREY TAYLORED GIRLS TROUSERS	
GREY BOYS SHORTS	
DAMAGED OR MARKED ITEMS	

Items are sold from 6 Burnside Road NE3 2DU – A drop off box is at the front door so anytime uniform can be donated there is no need to knock. Please REMEMBER items, particularly red, must not be marked as they are unable to be sold on.

I hold a lot of smaller sized items, but I am completely out of Red 7-8 Polos, 9-10 Polos of both colours. Cardigans 7-8 and 9-10 of both colours. If you have more uniform than you need and could even manage with 3 items rather than 5 items a week due to washing, please consider even a small donation, as I have received orders that I am unable to fulfil.

You can text me **Kate Watkins (Parent)** on **07947846974** to arrange a collection.



Our Oxford Reading Buddies this week are Eve W and Jacob H in Yellow Class. Well done and keep up the good work!
Mrs Lambert

Attendance

Our whole school attendance to date this academic year is **94.9%**

Our classes of the week are **Miss Coughlan's Class with 100%** and **Yellow Class with 99%**

Well done!

Please remember, I cannot authorise any absence due to family holidays - not even if you take me with you! I can only authorise leave in exceptional circumstances. If you do need to request leave, please ask for one of our updated forms from the office.

Many thanks
Mrs Lamb



More news about visits to Chopwell Woods! An organisation called Helix Arts have created a new #TranquilTrail to follow to provide a different way to enjoy the outdoors and get active. It is a digital trail with a downloadable map on the first information board and QR codes to find with digital art for you to listen to or watch as you go round. Sounds different! This could be combined with a picnic and fun at the free PlayPark event, as mentioned in last week's newsletter.



Essential Information

Thank you so much for joining our school team for the Children's Cancer Run on **Sunday 15th May 2022**. I am thrilled so many of you can attend!

Please arrive at Newcastle Racecourse, Gosforth Park by **11:20am** ready for our **11:40am start**. Our designated **car park is A**. Meet by our school banner at the school meeting point.

Thank you for helping our school to make a difference.

Miss Walsh



Wonderful work from **Indigo class** – you are our 'Mathletes of the Week'.

Sahib S-D, Mila H and Alexander G have been doing some excellent work on Mathletics this week – well done to you all!



Well done for the extra practise you're all doing at home with your times tables – you will all be maths superstars!

You'll all be very proud to hear that **Sahib S-D, Hania P and Harry F** have managed to play more than 200 Studio games each on TTRS – how impressive is that!

Miss Gasper

Advanced Notice of Dates

Updates will be added in red

Monday 9th May – Friday 13th May	Year 4 Swimming – every afternoon apart from Tuesday
Tuesday 10 th May	KS1 trip to Washington Wetlands
Tuesday 10 th May	Year 4 Visit to Safety Works PM
Sunday 15 th May	Children's Cancer Run
Tuesday 17 th May	2:30 - 3:30 KS1 Jubilee Afternoon Tea – parents invited
Wednesday 18 th May	2:30 - 3:30 EYFS Jubilee Afternoon Tea – parents invited
Thursday 19 th May	2:30 - 3:30 KS2 Jubilee Afternoon Tea – parents invited
Friday 27 th May	Year 2 Visit to Safety Works AM
Friday 27 th May	Break up for May Half Term Holiday
Monday 6 th June	School Closed
Tuesday 7th June – Friday 10th June	Year 4 Swimming – every afternoon
Tuesday 7th June – Wednesday 8th June	Year 1 Phonics Screen Check
Friday 17 th June	Dance Festival
Week Beginning 20th June	Year 4 Multiplication Tables Check
Week Beginning 4 th July	Schools 500 Games Competitions
Wednesday 13 th July	Year 3 Onsite Residential/Sleepover
Thursday 14 th July	Year 4 Onsite Residential/Sleepover
Friday 15 th July	Reports out to Parents